

Why do we cover 'mock interviews' at KS4?

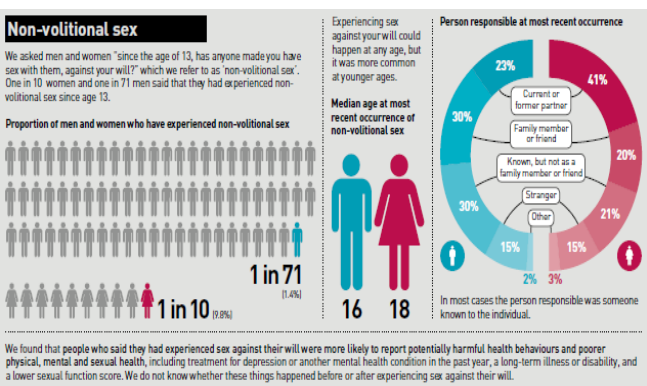
Student Voice indicates that interview skills is an area that students would like to develop in preparation for higher education.

OSCA

Why do we cover Consent, Violence and Harassment from KS3?

Data shows 1 in 10 women and 1 in 71 men have experienced non-consensual sex since age 13.

Natsal – Non-volitional Sex



Why do we cover 'internet safety' at KS3?

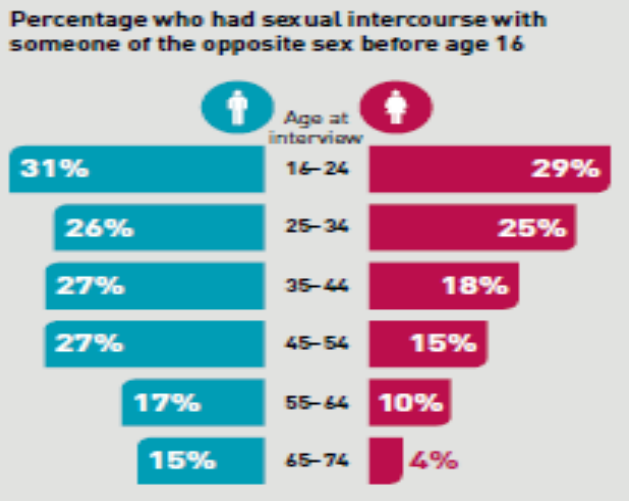
Student Voice indicates that 'Internet Safety' is an area that students would like more information about.

OSCA

Why do we cover healthy relationships at both KS3 and KS4?

Data shows 31% of males and 29% of females aged 16-24 have had sexual experiences.

Natsal – Sex under 16



Why do we cover STI's and Contraception at KS4?

STI's and Contraception at KS4?

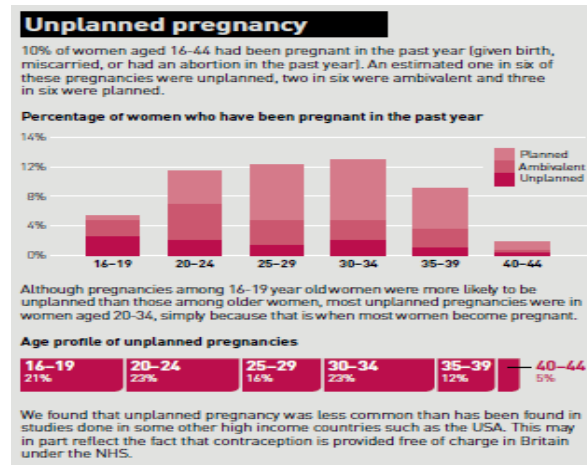
Natsal – STI's

Overall, around one in a hundred people aged 16-44 had chlamydia, although this varied by age, peaking at almost one in twenty women aged 18-19 and one in thirty men aged 20-24. Although people who reported more partners in the past year were more likely to have chlamydia, a lot of the chlamydia was found in people who reported only one partner in the past year, because most people only had one partner.

Why do we focus on Pregnancy and Parenthood at KS4?

Data shows the number of unplanned pregnancies are a local issue.

Natsal – Unplanned Pregnancy



Why do we cover Careers and Employment from KS3?

Data shows most employable sectors. National Careers Service



Where are the most jobs now?

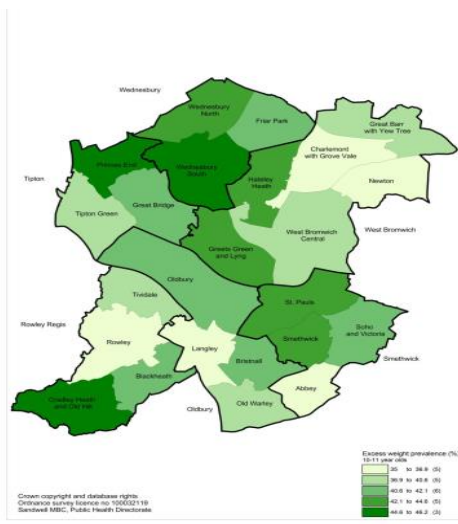


*LMI obtained from the Office for National Statistics and Gov.uk. Last updated April 2019

Why do we cover Obesity at KS3?

Over 36.9% of 10-11 year olds in Tividale are overweight/obese.

Sandwell JSNA – Health Targets

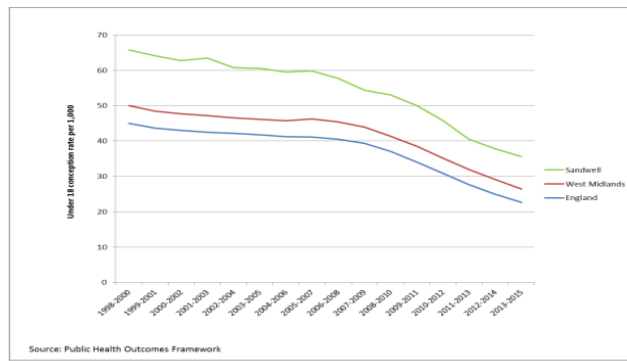


Why do we cover Pregnancy and Parenthood at KS4?

Data shows the number of pregnancies are reducing, BUT still above the national average.

Sandwell JSNA – Health Targets

Figure 1: Under 18 conception rates, 3 year averages 1998-2000/2013-2015



Why do we cover Drugs and Alcohol from Year 8?

Data shows increase in exclusions linked to drugs and alcohol misuse.

Sandwell JSNA – Health Targets

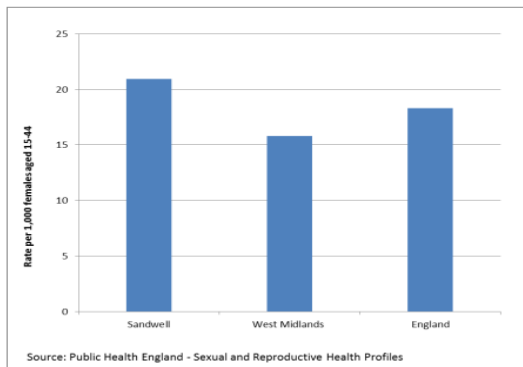
Table 5: Percentage of permanent exclusions attributed to drugs or alcohol (% of total exclusions in brackets)

Year	Sandwell		West Midlands		National	
	Total permanent exclusions	Total excluded for drugs and/or alcohol	Total permanent exclusions	Total excluded for drugs and/or alcohol	Total permanent exclusion	Total excluded for drugs and/or alcohol
2010/11	50	<5	760	30	5080	290
2011/12	60	8 (13%)	670	40 (6%)	5170	330 (6%)
2012/13	50	5 (10%)	670	40 (6%)	4630	360 (8%)
2013/14	40	5 (12.5%)	750	50 (7%)	4950	410 (8%)
2014/15	60	7 (12%)	950	80 (8%)	5800	490 (8%)

Why do we cover Contraception at KS4?

Sandwell has a higher uptake of LARC than other areas for all ages. However this data is not available specifically for young people and we have anecdotal evidence to suggest that LARC provision for younger people may be inadequate.

Sandwell JSNA – Health Targets

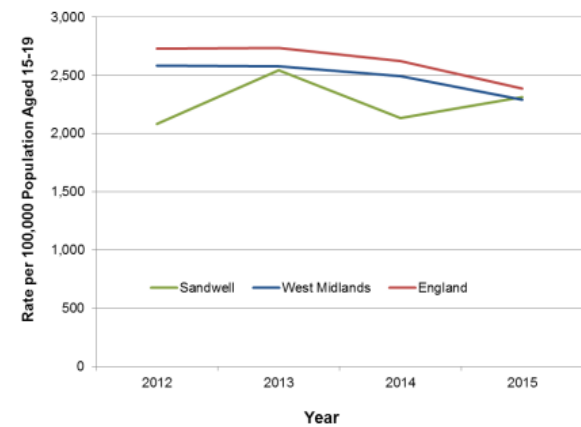


Notes: LARC = Long Acting Reversible Contraception
SRH = Sexual and Reproductive Health

Why do we cover STI's at KS4?

Data shows the number of young people with STI's in Sandwell is below national average, but on the increase. Sandwell JSNA – Health Targets

Figure 7: All New STI Diagnosis Rates, 15-19 Year Olds, 2012-15

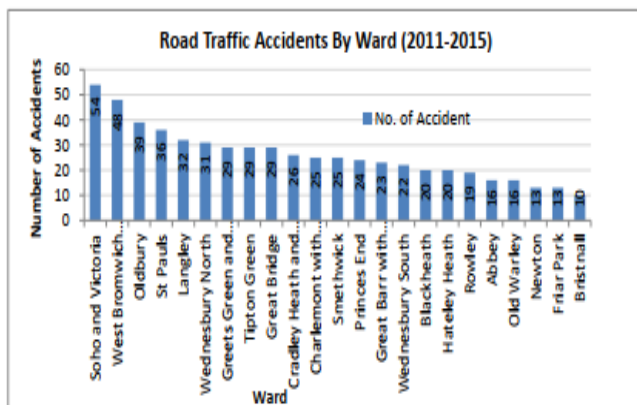


Why do we cover Road Safety from KS3?

Data shows the Oldbury area is the third highest in Sandwell for Road Traffic Incidents.

Sandwell JSNA – Health Targets

Figure 5



Why do we cover Knife Crime at Year 8?

Reports indicate Knife Crime is a local issue within the Birmingham and Sandwell area. A targeted programme for Year 8 is being implemented borough wide.

West Midlands Police

Why do we cover Careers and Employment in depth at KS4?

Data shows 74% of people in Sandwell are employed. This is below the national average.

National Careers Service

Employment
74% of people are employed.
Lower than the UK average of 76.1%.



Unemployment
5.1% of people are unemployed.
Higher than the UK average of 3.9%.